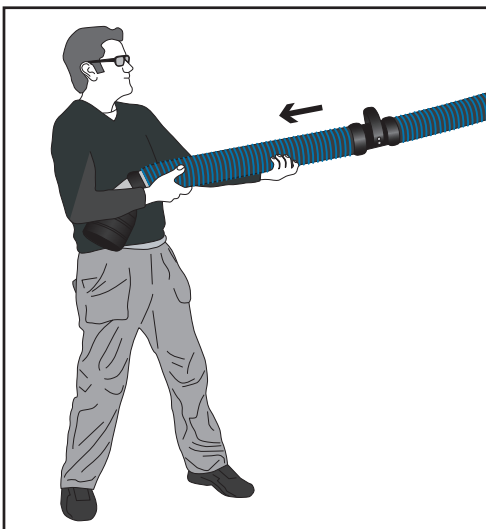
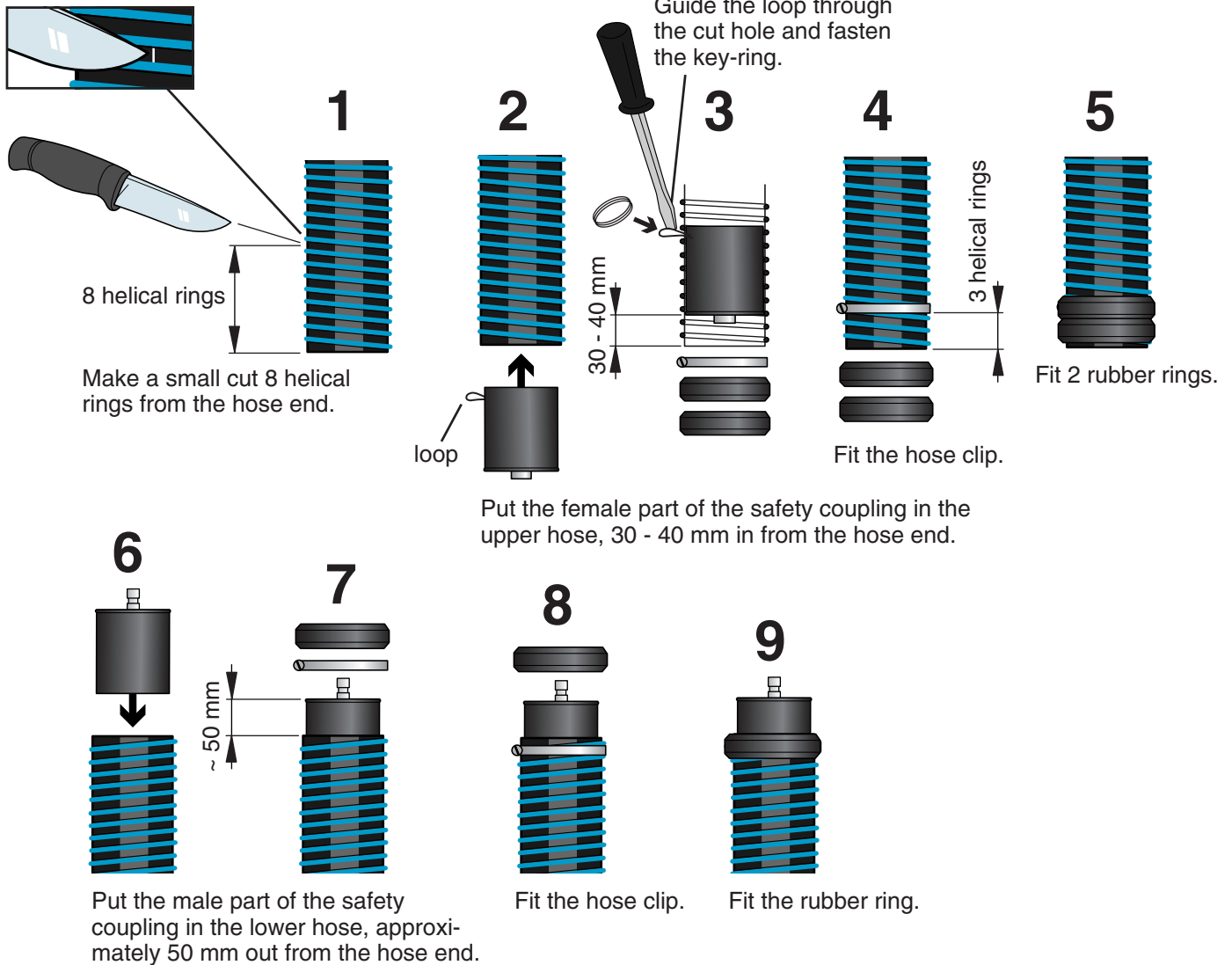


## Mounting Instruction

### Safety Coupling

No. 14889101  
Date 2007-05-01



### Operation and use

The safety coupling disconnects the hose if the nozzle for some reason does not disconnect from the exhaust pipe when the vehicle drives out from the station. The disconnection force is factory set to 500 N. Before remounting the safety coupling, pull the key-ring on the hose just above the safety coupling. A manual disconnection is also possible by pulling the key-ring.

### Service

Check the operation of the safety coupling at least once every two months. Check that it is possible to draw it apart by a force of approximately 500 N (= solid hand force, see picture to the left). Clean and grease the safety coupling if necessary. If the operation is not correct, please contact a Nederman representative for technical advice.